

GENORAY MAKES THE INVISIBLE VISIBLE !



GENORAY Co.,Ltd.
512, 560, Dunchon-daero, Jungwon-gu, Seongnam-si,
Gyeonggi-do, 13230, Korea
Tel. +82-31-627-3900 Fax. +82-31-737-8016
genoray@genoray.com

Genoray America Inc.
147 E. Bristol Lane Orange, CA 92865 USA
Tel. +1-855-436-6729 Fax. +1-714-786-8919
inquiry@genorayamerica.com
www.genorayamerica.com

Genoray EU GmbH
Westhafenstr. 1 13353 Berlin, Germany
Tel. +49-30-509-694-98 Fax. +49-30-530-198-08
smhan@genoray.com

Genoray Japan
2F Ishibashi-Bldg, 1-4-15 Shinyokohama,
Kohoku-ku, Yokohama-city, kanagawa, 222-0033 Japan
Tel. + 81-45-620-4971 Fax. +81-45-620-4972
Info@genorayjapan.co.jp www.genorayjapan.co.jp

GENORAY RELIABLE SERVICE

Service and support is always our number one priority. If you require any service after the purchase of a Genoray unit, GENORAY is always there to support you. Our service staff is waiting to support you so please feel free to give us a call. We have built up a reputation for superior quality and service in Korea which we hope to extend to you.

* The specifications above can be changed to improve performance without notice.



prime
OSCAR

**SURGICAL MOBILE
C-ARM X-RAY SYSTEM**



GENORAY MAKES THE INVISIBLE VISIBLE

With the incessant challenge, and the enthusiastic passion, we, Genoray is the company committed to making contribution to the happiness and the healthy life of human being through the X-Ray technology, a valuable light which saves lives.













- Developed OSCAR Prime
- 1M CCD camera is equipped on all C-Arms
Acquired CE certificate for ZEN-2090Pro
ZEN-2090Pro FDA 510(K091918)
Developed ZEN-7000
- Developed C-Arm with 1M pixel camera
Developed economical C-Arm (ZEN-2060)
- Developed High Performance C-Arm (ZEN-3090)
Acquired CE certificate for ZEN-3090
- Selected as Superior Technology Company
Selected as INOBIZ Company, Awarded export prize
Approved KGMP Quality Management Standard Conformity
Awarded with "10 Million Dollars Trophy" from Korea International
Awarded Design&Tech innovation grand prize

Powered by and enthusiastic passion for X-Ray technology, Genoray stands up to the incessant challenges of constant leading a healthy lify by committing to the improvement of our products.

YOUR OSCAR!

The new OSCAR Prime is a culmination of decades worth of developmental experience from Genoray. Your diagnosis need will be met while improving your productivity.



-  230x230 / 260 x 260 mm Flat-Panel detector
-  4.5 / 5.3kw, HFG
-  Active air cooling HFG
-  180° Dynamic Orbital Rotation
-  Free space 800mm SID 1,000mm
-  10.4" Touch Screen
-  34" Wide Monitor
-  Dual Foot Switch (Shot/ Lift Up, Save/Lift Down)
-  Smart Review
-  Lowering Dosage
-  Structured Dose Report
-  -DICOM 3.0
-CD/DVD Burner
- USB Port



YOUR CHOICE OF ...

- 1 FLAT-PANEL**
230 x 230 / 260 x 260 mm
- 2 MONITOR**
 - 34" Monitors
 - Two 19" Monitors
- 3 FOOT SWITCH**
 - Dual Foot Switch
 - Triple Foot Switch

As a surgeon you need the skills and dedication to perform an increasing number of challenging interventions. Crisp, clear images are also crucial, whether you are performing open surgery or advanced minimally invasive procedures.

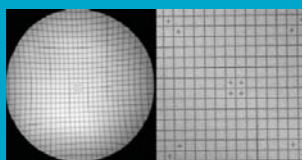
EXCEPTIONAL IMAGE QUALITY

With an optimal flat panel detector size of 23 x 23cm, 26 x 26cm you won't miss a thing with its high quality resolution. It makes accurate diagnosis in a variety of departments especially DSA



Laser localizer marks exact field of fluoroscopy to decrease in order exposure.

DISTORTION-FREE FLAT DETECTOR IMAGING



Distortion & Brightness uniformity

Flat-panel keypoint :

- > Distortion-free imaging
- > High quality resolution
- > Larger field of view

ACTIVE AIR COOLING HIGH FREQUENCY GENERATOR

Our 4.5 / 5.3kW generator is one of the most powerful generator in the world. Active aircooling system prevents overheating and offers a long duration of operation with stable results.



- High Performance Active Air Cooling
- Protect valuable parts (tube, HFG, etc.) from overheating and damage ; Guaranteed lifetime, safe medical treatment
- Extended usage for longer interventional procedures
- Various Pulsed X-Ray
- Smart collimator

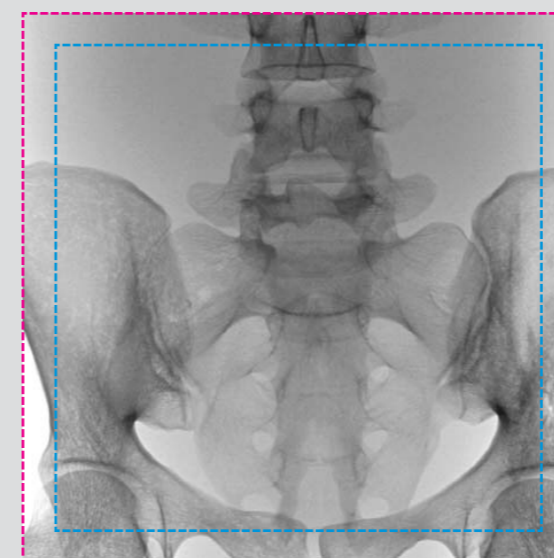
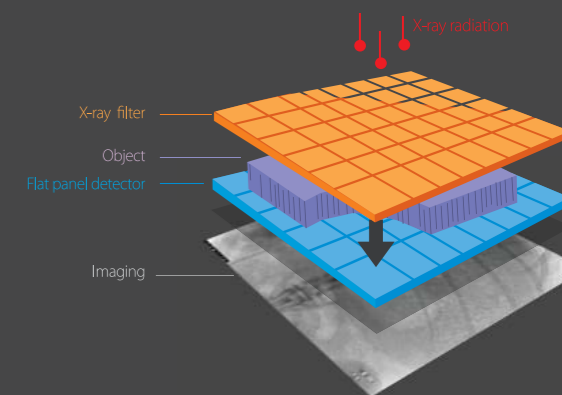
SMART IMAGE PROCESSING

HIGH SPEED READOUT, HIGH DEFINITION

Flat panel detector doesn't miss a beat!

WIDE FOV, LOW NOISE, LOW DOSE, HIGH CONTRAST RATE

Your needs will be met while improving your productivity.



FOV (Field of View) 230 x 230 mm / 260 x 260 mm

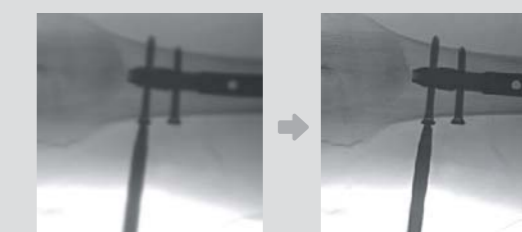
EDGE ENHANCEMENT

For user to get more accurate diagnosis result enhancing edge of image.



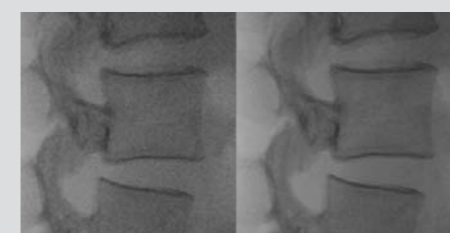
METAL CORRECTION

To prevent over-dose radiation or low quality image casued by metal inturrption on field of view.



DENOISING

Techniques to reduce noise through many X-ray image processing algorithms



MOTION CORRECTION

This function detects the movement and reduce the after image while exposing X-ray.



COMPACT & INTELLIGENT DESIGN

Convenient touch screen and simple foot switch make easy image acquisition. Rewind missed image by software to prevent retake of image.

LIGHTWEIGHT ARCHITECTURE

OSCAR Prime is designed to be operated easily.

INTELLIGENT OPERATION

Measurement of length, angle, and Input and storage of line, arrow, characters

COMPACT & HYBRID BODY

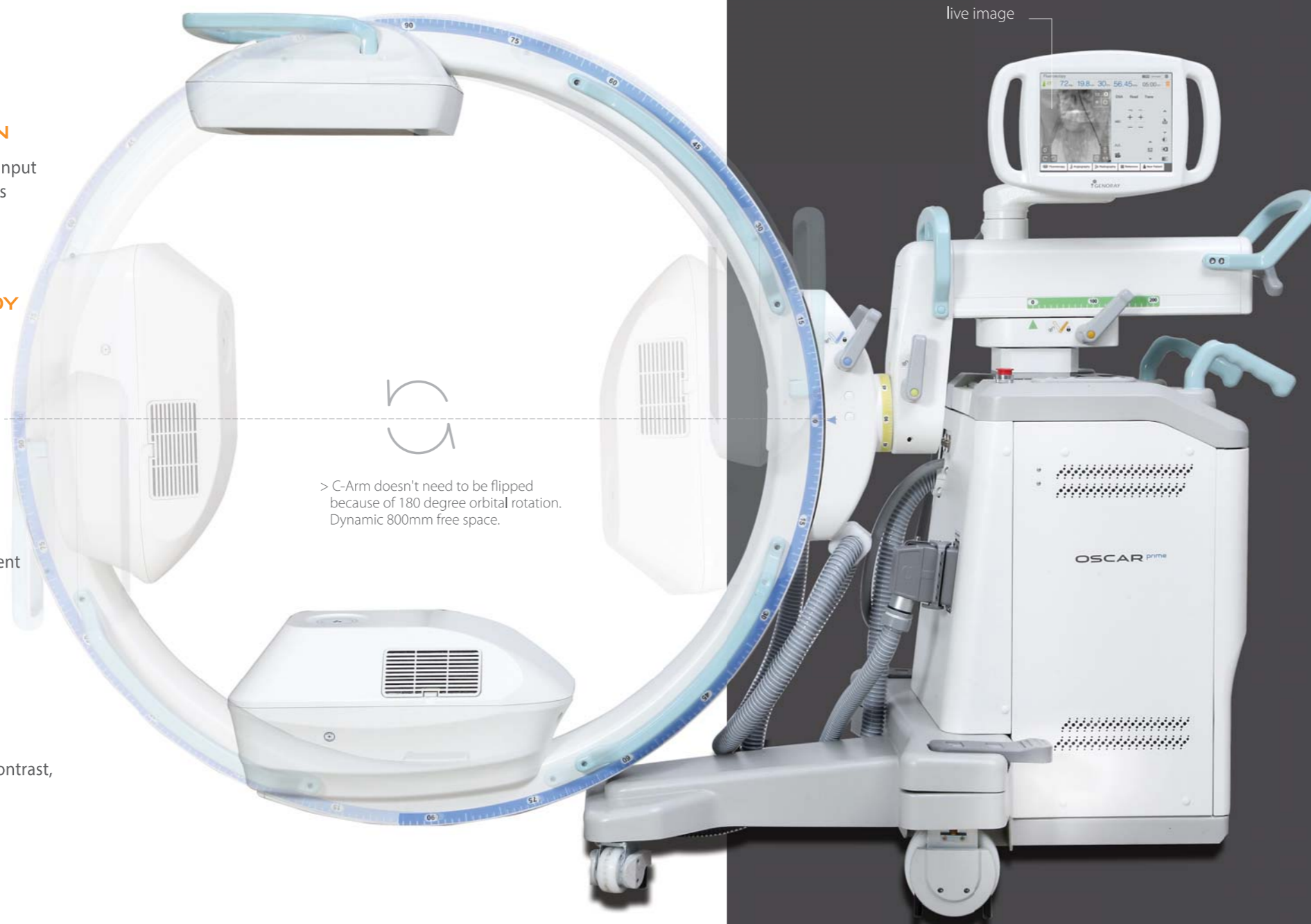
Compact body with excellent movement and ease of operation with a perfect balanced C-Arm

10.4-INCH TOUCH LCD

The 10.4-inch touch LCD Screen is highly sensitive and allows for efficient operation of the system

34-INCH WIDE MONITOR

34-inch wide monitor displays superior images with outstanding contrast, colour, and resolution.



> C-Arm doesn't need to be flipped because of 180 degree orbital rotation. Dynamic 800mm free space.

X-RAY DOSE MANAGEMENT

LOW DOSE MODE

Low dose mode is designed to acquire reasonable image to diagnose the patient with minimum dosage.

SMART REVIEW

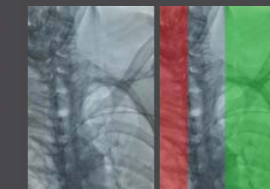
Review and store image maximum 10 seconds before last image.

DOSE STRUCTURED REPORT

Dose SR enables efficient radiology workflow, improves patient care, and enhances the radiology working conditions.

VIRTUAL COLLIMATOR

The virtual collimator allows for the selection of your desired field of view, while reducing the amount of radiation exposure by limiting the X-Ray beam.



AUTO COLLIMATION

Prevention of unnecessary X-Ray exposure by focusing on the area of interest while automatically collimating the remaining areas.



IMAGE CHAIN TECHNOLOGY

X-ray for acquisition of low-dose / high-quality medical images Image chain technology considering interaction with human body, detector, image processing algorithm etc.

POWERFUL SOFTWARE ZENIS

A total solution from acquisition, storage, management, communication to print out
 Provide convenient environment from user-centric interface /
 Diagnosis and confirm from recognizable simple icons /
 Convenience of database management



- Convenient diagnostic functions for easy patient / image management
- Accurate diagnostic tools
- Improve the efficiency of your hospital management

- Perfect compatibility with all PACS
- A must have for a digitally equipped hospital
- Convenient communication and management for your customers

IMAGE MANAGEMENT

Invert, rotation, zoom In/out, magnify glass and etc

MEASUREMENT & ANNOTATION

Measurement of length, angle, and Input and storage of line, arrow, characters

DICOM 3.0

Storage service, worklist service

RECOMMENDED SYSTEM REQUIREMENTS FOR ZENIS

DATABASE MANAGEMENT IN HIPAA APPROVED FORMAT

DICOM SUPPORT



DSA [DIGITAL SUBTRACTION ANGIOGRAPHY]

Angiography option utilizes repeating stored videos while subtracting unwanted artifacts

NATIVE DSA

Pairing fluoroscopy with contrast media to display the basic angiography views

MOTION MATCHING

Selects the proper mask to apply and remove artifacts made by a patient's movement or breathing

POST-PROCESSING

processing: Improvement of the processed image after the DSA procedure

LANDMARKING / BRIGHTNESS / CONTRAST

After setting the position for a vessel, the subject can be placed back to their original position by using the shift function to compensate for any movement. Allows for various functions that assist with accurately inserting a catheter.

ROAD MAPPING, LAND MARK, PEAK OPENCIFICATION AND MOTION DETECTION

After setting a position for a vessel, the subject can be moved back to their original place by using the shift function to compensate for any movement. Provides various functions that helps accurately to insert a guide wire, catheter. is compatible with the hybrid operating room.

AUTO ROADMAP MASK

Obtain blood vessel type information while only using a small amount of contrast media

MANUAL ROADMAP MASK

Roadmap your vessels using a previously taken DSA image

ROADMAP PIXEL SHIFT

Re-position the roadmap mask by shifting the pixels to the proper position

PEAK OPACIFICATION

Ability to diagnose a blood vessel with only a small amount of contrast media

