



MX-300

Unsurpassed Image Quality and Easy Operation

- Stable Output by The Inverter System
- Full AEC Mode (Auto kV)
- Auto Release Compression After Exposure
- High Performance Dual Focus System
- Highly Sensitive Fiber Grid Bucky Device
- 19 Step Density Control
- 2 Precise Collimation Formats

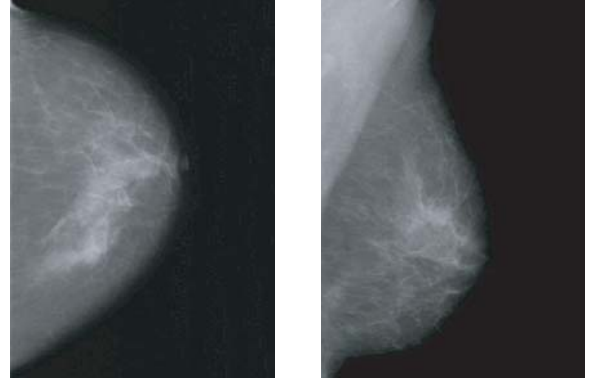
icanview

MX-300 Mammography system

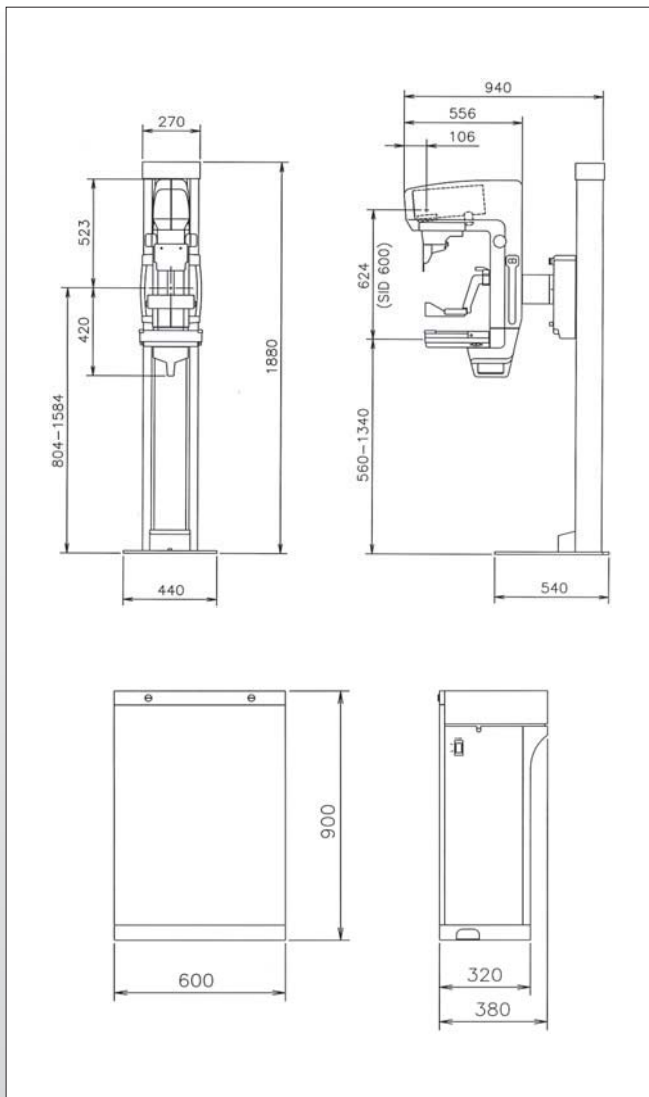


Intelligent Automatic Exposure Control (AEC)

With the Automatic Exposure Control system, it is possible to produce images with reliable intensity suitable for any film, screen, or method of radiography. Furthermore, it greatly enhances the convenience of radiography by embedding the Full-AEC function which is capable of utilizing the Auto kV.



Dimensions



Specifications

Generator

Type	High Frequency Inverter
Radiographic Ratings	Large Focal Point 22-35kV / 1-600mAs Small Focal Point 22-35kV / 1-100mAs

X-ray Tube

Focal Spot Size	Dual Focus 0.3 and 0.1 mm
Rotating Anode	Molybdenum(Mo) / 300KHU
Port Material	Beryllium(Be)
Filtration	Mo

Radiographic Stand

C-ARM	Vertical 560-1340mm Rotation Right 180° / Left 160°
SID	600mm Fixed distance
Compression	Manual and Motorized (Max 18kg) Automatic or manual Release

Bucky Device

Cassette Size	18 X 24cm
GRID	Reciprocating, 4 : 1 91 line/inch

Automatic Exposure Control

Type	Solid-State Detector Microprocessor Control
Mode	Full / Semi / Manual
Density Adjustment	19 density steps

Optional

- 24 X 30cm Bucky Device
- Magnification Device
- Compression Force and Thickness Display Unit
- Pb Acryl Plate
- Biopsy unit

Line Voltage

200~220Vac, 50/60Hz, Single Phase