

# HF-525Plus

General Purpose Radiographic System

# HF-525Plus

General Purpose Radiographic System

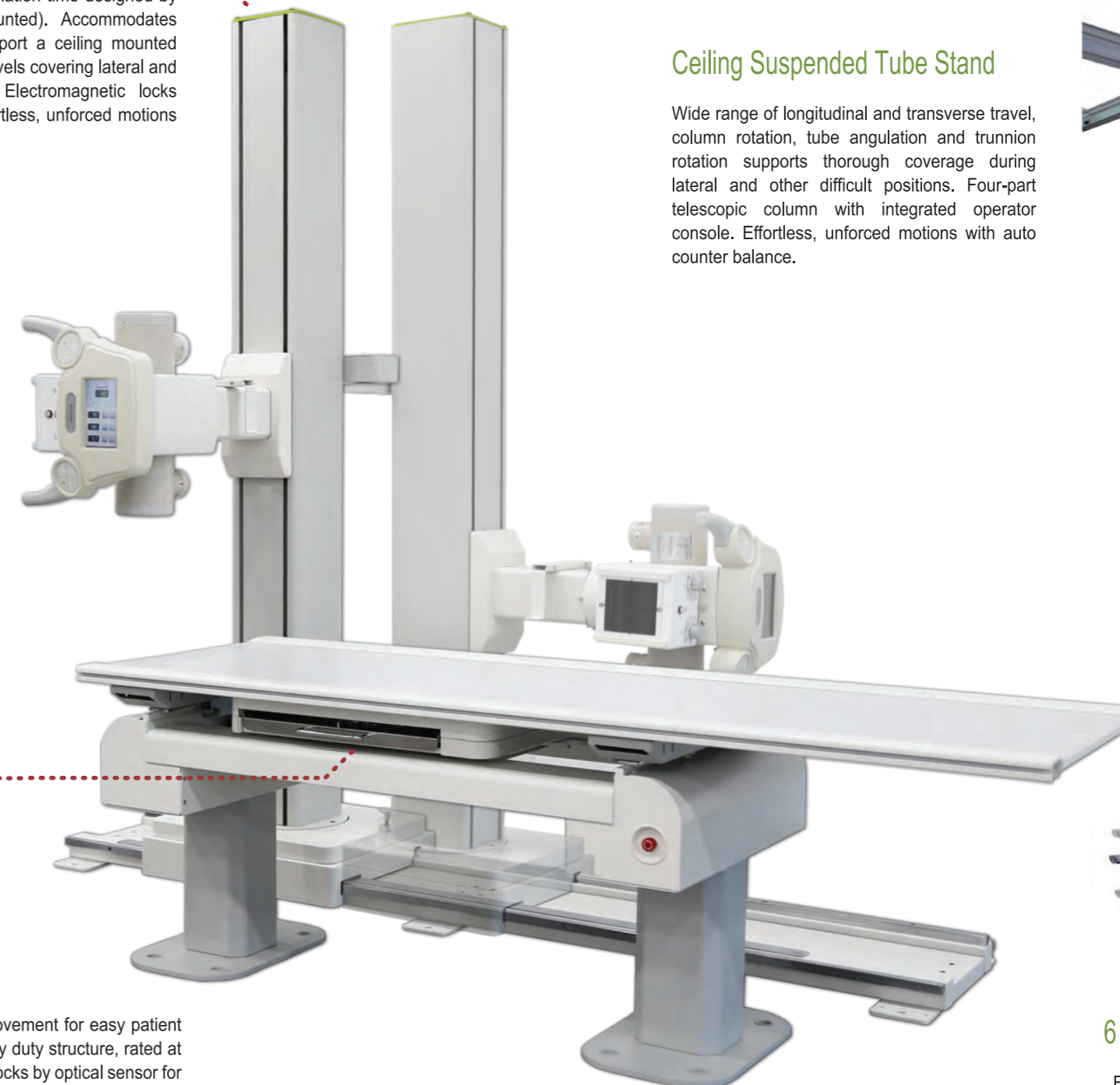
### Wall Bucky Stand

Wide vertical-travel range with minimal focal spot to floor distance for comfortable standing position. Electromagnetic locks secure at any vertical travel. Effortless, unforced motions by counterbalanced. Cassette flexibility (5" x 7" to 17" x 17") with durable bucky tray.



### Tube Stand

Saving the cost and installation time designed by freestanding (Floor mounted). Accommodates facilities where can't support a ceiling mounted system. Wide range of travels covering lateral and other difficult positions. Electromagnetic locks secure at any travel. Effortless, unforced motions



### Ceiling Suspended Tube Stand

Wide range of longitudinal and transverse travel, column rotation, tube angulation and trunnion rotation supports thorough coverage during lateral and other difficult positions. Four-part telescopic column with integrated operator console. Effortless, unforced motions with auto counter balance.



### 4 Way Floating Table

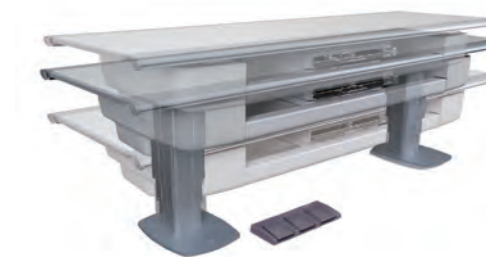
Smooth and parallel four-way table movement for easy patient positioning. The robust table with heavy duty structure, rated at 250Kgs patient load. Electromagnetic locks by optical sensor for longitudinal and transverse travel. Cassette flexibility (5" x 7" to 17" x 17") with durable bucky tray.



### 6 Way Table

Elevating table having vertical motorized movement to help elderly, handicapped or pediatric patients more comfortably.

The robust table with heavy duty structure and durable actuators, offers up to 250 kg patient load.





### HF-525plus Technical Specifications

Category / Range	32kW	40kW	50kW	65kW	80kW		
Generator	Type High Frequency Inverter type						
	Max mA/kV	400mA/125kV	500mA/125kV	630mA/150kV	800mA/150kV	1,000mA/150kV	
	Max rating	400mA @80kV	500mA @80kV	630mA @75kV	800mA @62kV	800mA @81kV	1,000mA @80kV
	mAs range	0.1 ~ 400mAs	0.1 ~ 500mAs	0.1 ~ 630mAs	0.1 ~ 800mAs	0.1 ~ 800mAs	0.1 ~ 1,000mAs
	Exposure Time	0.001 ~ 6 sec (81 steps)					
	APR	288 APR		1290 APR			
	AEC	3-field ionization chamber(s) with AEC board (optional)					
OP console	LED type (standard) / LCD or Touch Screen console (optional)						
Tube	Line voltage & phase		220VAC 50/60Hz single phase			380-400VAC 50/60Hz three phase	
	Anode heat storage	140KHU (standard) / 300KHU (optional)		300KHU (standard) / 400KHU (optional)			
	Focal spots (dual)	1.0/2.0mm (0.6/1.2mm optional)		0.6/1.2mm			
	Max mA/kV	500mA/125kV		700mA/150kV	1,000mA/150kV (with high speed rotor function)		
	Target angle	16° (12°)		12°			
	Collimator	Manual type with timer					
	Tube Stand	Longitudinal travel	200cm				
Transverse travel		26cm (Optional)					
Vertical travel		From 40 to 190cm (from floor level)					
Bucky Table	Type	4 way floating top table					
	Longitudinal travel	90cm					
	Transverse travel	30cm					
	Max loading	250kg					
Wall bucky stand	Cassette tray	Max. 17 x 17 inch					
	Type	Floor mounted					
	Grid	Oscillating grid (10:1 standard)					
Options	Vertical travel	From 40 to 190cm (from floor)					
	AEC	3-field ionization chamber with AEC control board (16 steps density adjustment)					
	High speed rotor	-		High speed controller			
	PSU	Power supply unit with battery bank / Capacitor bank		-			
	Ceiling suspension	Ceiling suspended tube stand with LCD display					
	Elevation table	Up/down motorized elevation with 4 way floating top table					
	DAP	Dose area product chamber					
Tube head display	kV, mA, mAs/time & tube head angle digital display with touch screen control						

\* Specifications are subject to change.

\* The dimension & weight information will be found in the Product Data document that includes all other detailed specifications.

\* The combinations of system configuration like tube, HFG and other optional items can be determined by customers.

### HIGH FREQUENCY GENERATOR



32 kW / 40kW



32 kW / 40kW with Capacitor Bank



50 kW



65kW / 80kW



FnD Console



LCD Console



Touch screen Console



65kW/80kW Console

TRUST BEGINS WITH ECORAY

www.ecoray.kr

“Going DIGITAL”

ecoCR

✓  
**21sec**  
Loading time

✓  
**80µm**  
Resolution



### Acquisition software - “ECOVIEW”

- Selectable UI styles between Card & Classic designs
- Smart Dash Board & Order Mapping
- Stitching interface available
- Shows preview image in 10 stages during loading
- Easy & quick study choice through graphical APR
- Wide variety of tools for edit
- DICOM print connectivity

### Barcode system

- Automatically recognizes cassette size (14" x 17", 10" x 12", 18 x 24cm) by barcode reader

### Rigid type IP

- No damage or scratch on image plates during scanning
- Scanning & erasing without roller
- No cut-off image during winter and cold periods

### Durability

- Extremely simple structure design
- Strong aluminum base plate
- Flip covers to prevent dust inside the scanner

## Specifications

Cassette	CR Cassette 14 x 17(inch)	Network	100 Mbit
	CR Cassette 10 x 12(inch)	PC Connection	USB 2.0
	CR Cassette 18 x 24(cm)	Computer min. requirements	OS : Win 7 or 10 CPU : Intel i5 RAM : 4GB Graphic Card : Intel HD 2500 HDD : 500GB Monitor : FHD 1920 x 1080
Slots	Single Cassette feed	Operating conditions	Temperature : 10 ~ 30°C Humidity : 15 ~ 85% RH
Dimensions (W x D x H)	436 x 636 x 196mm		
Weight	21.5kg (47.4lbs)		
Grayscale Resolution	Acquisition : 16 bits per pixel Display : 12 bits per pixel		
Line voltage	90~264VAC 50/60Hz Single Phase		

### Image Processing Time & Throughput

Cassette	Resolution	Image access (sec.)	Erase (sec.)	Total (sec.)	IPs/hour
14 x 17	80 µm	37	27	66	62
	160 µm	21	27	50	72
10 x 12	80 µm	29	20	51	70
	160 µm	17	20	29	124
18 x 24 cm	50 µm	40.5	7.1	48	75



## Cassettes



### Dust free & Easy cleaning

- Easy to clean up dust on IPs
- Prevent dust from outside

### Featherlight

- 14x17" : 2.2kg 10x12" : 1.1kg 18x24cm : 0.8kg

### User friendly design

- Barcode label
- Various colors  
14x17 (Green), 10x12 (Blue), 18x24cm (Pink)